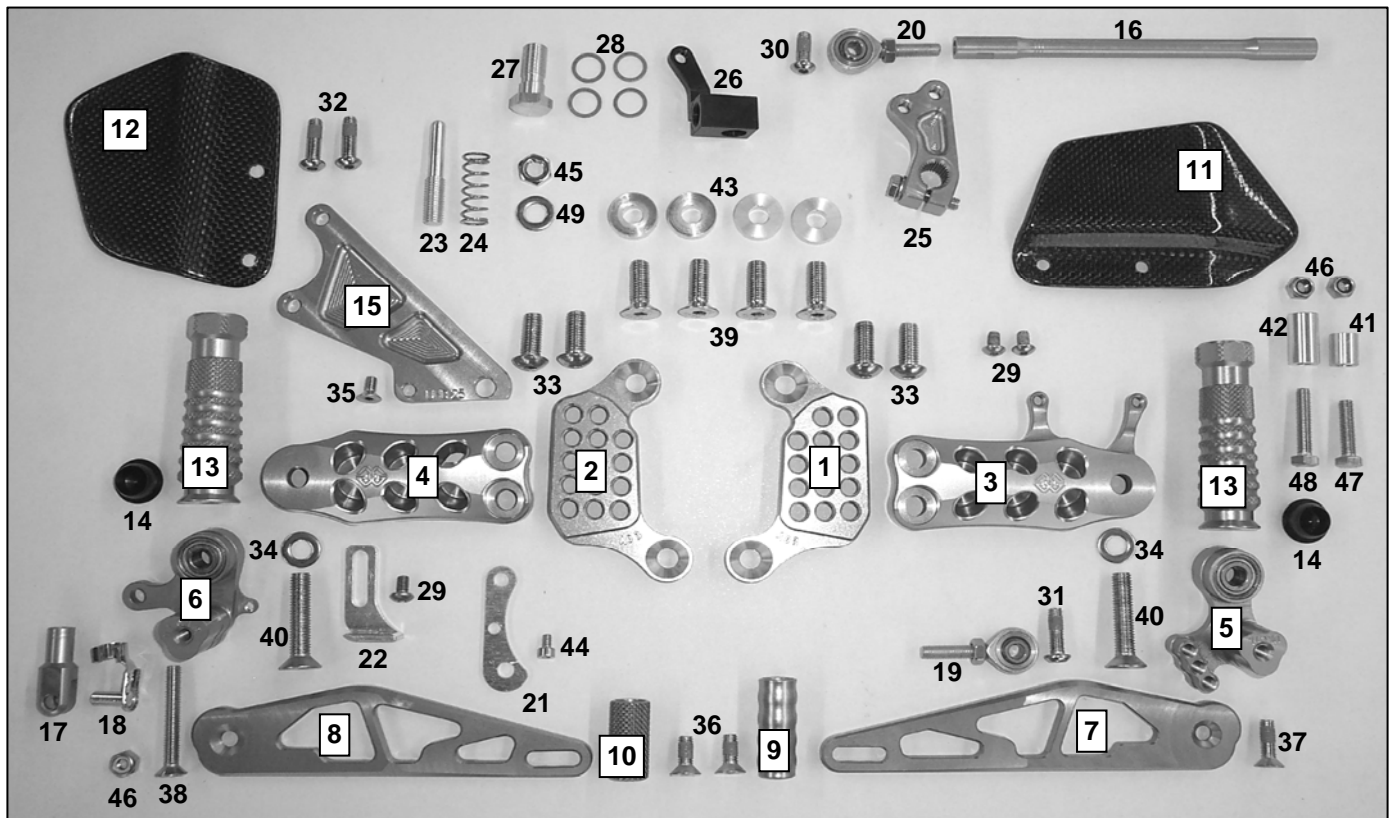


as31gt-A03P

Teileliste/partlist



Pos.	Description	Part-No.	Qty.
1	left basic plate	A03GL-*	1
2	right basic plate	A03GR-*	1
3	left adjusting plate	UV01L-*	1
4	right adjusting plate	UV01R-*	1
5	gear lever bearing	UL01L-*	1
6	brake lever bearing	UL01R-*	1
7	gear lever	US02-*	1
8	brake lever	UB02-*	1
9	gear lever toe piece	UTR02-*	1
10	brake lever toe piece	UTR01-*	1
11	left heel protector	CAR 01L	1
12	right heel protector	CAR 01R 6,5-49	1
13	footrest	UF04-*	2
14	plug	7 702 856	2
15	holder brake cylinder	UHB25-*	1
16	gear shaft	USW03-*	1
17	brake cylinder adapter	UAD02-23	1
18	clip	FKB 6x12	1
19	ball and socket bearing	GAKFL6	1
20	ball and socket bearing	GAKFR6	1
21	holder	HA03	1
22	holder stopp light	BLS02	1
23	brake application pin	BR01	1
24	spring	DF-1,2x11x30,2	1
25	gear arm	SA01-*	1

Pos.	Description	Part-No.	Qty.
26	holder	SPS-03-B	1
27	banjo bolt	BB-10-1-25	1
28	conical nipple	DR-10-CU	4
29	screw	M5x8-7380-VA	3
30	screw	M6x16-7380-VA	1
31	screw	M6x20-7380-VA	1
32	screw	M6x25-7380-VA	2
33	screw	M8x20-7380-VA	4
34	washer	ULS8,4	2
35	screw	M5x10-7991-VA	1
36	screw	M6x16-7991-VA	2
37	screw	M6x20-7991-VA	1
38	screw	M6x45-7991-VA	1
39	screw	M8x25-7991-VA	4
40	screw	M8x40-7991-VA	2
41	collar	DS11-6-14	1
42	collar	DS12-6-22	1
43	collar	DS20-8-6	4
44	screw	M4x6-912-VA	1
45	nut	M8-934-VA	1
46	nut	M6-985-VA	3
47	screw	M6x25-933-VA	1
48	screw	M6x30-933-VA	1
49	washer	ULS6,4	1
50			

-* = colour; G= gold / t= titanium / B= black